

NICOLL HYDRAULIC DRAINS

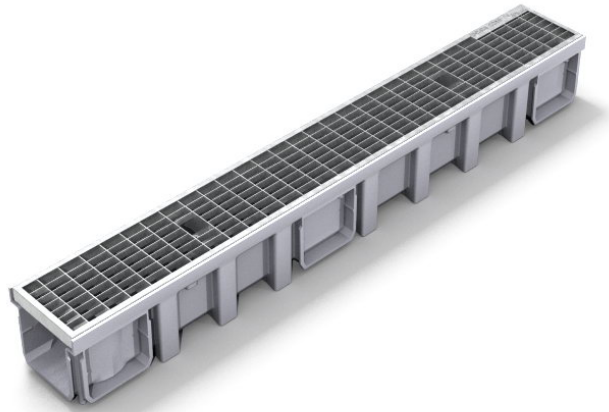
New Ideas for solutions to drain surface run-off water

Technical Data Sheet

Drain CONNECTO CAN10BC

Product description

Drainage channels with gratings of length 130 mm, of class B125 complying with the standard NF-EN 1433, holding the EC marking and in compliance with the order of 31/05/94 concerning the accessibility of mobility impaired people, assembled via a male/female joint system with locking.

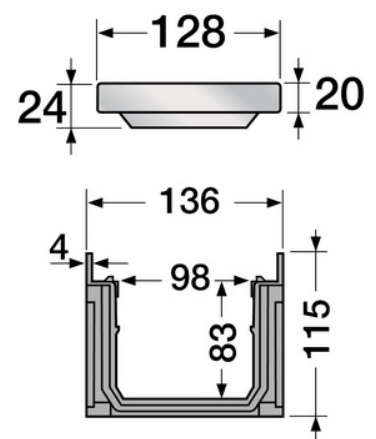


It is comprised of:

- a body in injected Polypropylene Grey, of length 1 ml, with PP rabbet.
- one grating Galvanised steel grating class B125 at recessed non-lockable.

Technical Characteristics

- Resistance class: B125
- Effective width: 98 mm
- Effective depth: 83 mm
- Grating type: recessed
- Drainage surface: 830 cm²/ml
- Opening dimensions: 15 / 30 mm
- Weight: 3,9 KG



Nicoll is certified
ISO9001v2008 and ISO14001v2004



Technical assistance
02.41.63.73.25

Siège social et usines : 37, rue Pierre & Marie Curie - B.P. 966 49309 Cholet Cedex - Tel : 02 41 63 73 83 - Fax : 02 41 63 73 84
Site internet : www.nicoll.fr - Demande de documentation : info@nicoll.fr - Renseignements techniques : tech-com.nicoll@alixis.com
SAS au capital de 7 683 431 - 060 200 128 R.C.S. Angers

an OAlixis company

Fastening the gratings

Fastening the gratings Galvanised steel grating not possible.

Related products

End cap/Outlet (at end of drain):

➤ **NAT177 : End/Cap Outlet (end or lateral)**

PVC End cap/Outlet base GREY Ø 100 for CONNECTO CAN177 / CAN10BC drains, designed to join together at each end of the drain or on side sockets after uncapping.

➤ **NAV177 : End/Cap Outlet (end or lateral)**

PVC End cap/Outlet base GREY Ø 110 for CONNECTO CAN177 / CAN10BC drains, designed to join together at each end of the drain or on side sockets after uncapping.



Tappings:

➤ **STCAN : Tapping (vertical)**

PVC GREY Tapping for vertical outlet Ø 100 (connection to storm drain), designed for all of the drains in the CONNECTO range.

➤ **SVCAN : Tapping (vertical)**

PVC GREY Tapping for vertical outlet Ø 110 (connection to storm drain), designed for all of the drains in the CONNECTO range.

➤ **SXCAN : Tapping (vertical)**

PVC GREY Tapping for vertical outlet Ø 100 (connection to storm drain), designed for all of the drains in the CONNECTO range.



Sand trap

➤ **PSCVT : Sand trap**

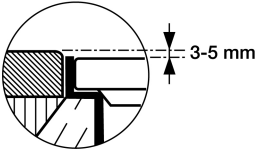
GREY PVC Sand Trap, for CONNECTO drains - width 130 and 200, with PVC basket and outlet connection Ø 100. Designed to trap sand and floating matter, it is mounted directly on the vertical outlet of the drain. Its modular design allows for flexibility in vertical positioning and a 360° orientation for the outlet, to simplify installation.

➤ **PSCVV : Sand trap**

GREY PVC Sand Trap, for CONNECTO drains - width 130 and 200, with PVC basket and outlet connection Ø 110. Designed to trap sand and floating matter, it is mounted directly on the vertical outlet of the drain. Its modular design allows for flexibility in vertical positioning and a 360° orientation for the outlet, to simplify installation.

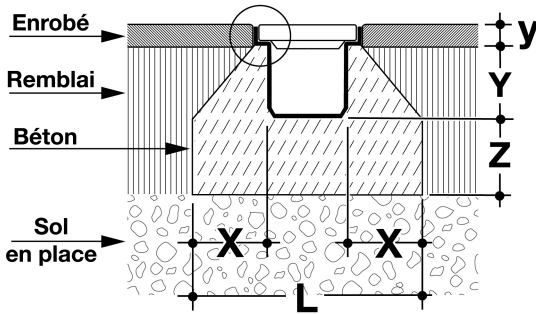
Diagram of installation principle


Installation with embedding:



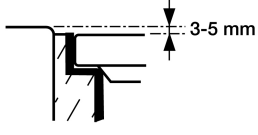
3-5 mm

POSE DES CANIVEAUX HYDRAULIQUES GAMME CONNECTO
SCHEMA DE PRINCIPE



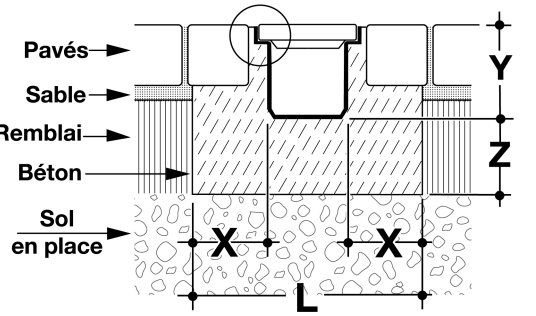
<p>CANIVEAUX HYDRAULIQUES</p>  <p><i>an OAliaxis company</i></p> <p>B.P. 966 49309 CHOLET tél. 02 41 63 73 83 tech-com.nicoll@aliaxis.com</p> <p style="font-size: small;">PRINCIPE D'EXECUTION: Ce plan respecte au mieux les normes et les règles professionnelles; l'entrepreneur est tenu de le vérifier et de le compléter éventuellement pour l'adapter aux conditions particulières du chantier.</p>	Gamme CONNECTO	Pose avec ENROBE	CANB1/11.06							
	Classe : B125					Dimensions en millimètres				
		Référence	Qualité béton	X	L	Y	y	Z		
Largeur 130	CAN10BC/CAN177+GR77	200kg/m ³	80	290	95	25	100			
Largeur 200	CAN15BC/CAN188+TR88	200kg/m ³	80	370	125	25	100			


Installation with paving or plates:



3-5 mm

POSE DES CANIVEAUX HYDRAULIQUES GAMME CONNECTO
SCHEMA DE PRINCIPE



<p>CANIVEAUX HYDRAULIQUES</p>  <p><i>an OAliaxis company</i></p> <p>B.P. 966 49309 CHOLET tél. 02 41 63 73 83 tech-com.nicoll@aliaxis.com</p> <p style="font-size: small;">PRINCIPE D'EXECUTION: Ce plan respecte au mieux les normes et les règles professionnelles; l'entrepreneur est tenu de le vérifier et de le compléter éventuellement pour l'adapter aux conditions particulières du chantier.</p>	Gamme CONNECTO / CAN10BC	Pose avec PAVES	CANB2/11.06							
	Classe : B125					Dimensions en millimètres				
		Référence	Qualité béton	X	L	Y	Z			
Largeur 130	CAN10BC/CAN177+GR77	200kg/m ³	80	290	120	100				
Largeur 200	CAN15BC/CAN188+TR88	200kg/m ³	80	370	150	100				