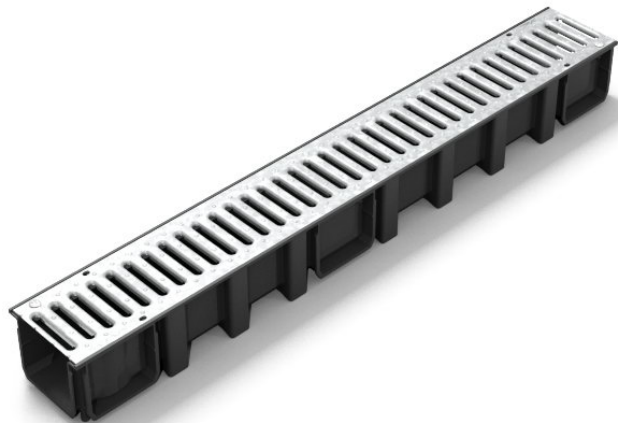


Technical Data Sheet

Drain CONNECTO DRP178

Product description

Drainage channels with gratings of length 130 mm, of class A15 complying with the standard NF-EN 1433, holding the EC marking and in compliance with the order of 31/05/94 concerning the accessibility of mobility impaired people, assembled via a male/female joint system with locking.

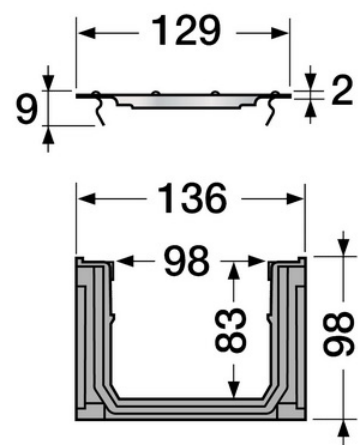


It is comprised of:

- a body in injected Polypropylene Black, of length 1 ml, without rabbet.
- one grating Galvanised steel footway class A15 at covering lockable with the FIXCAN1 kit.

Technical Characteristics

- Resistance class: A15
- Effective width: 98 mm
- Effective depth: 83 mm
- Grating type: covering
- Drainage surface: 260 cm²/ml
- Opening dimensions: 10 / 80 mm
- Weight: 2,8 KG



Nicoll is certified
ISO9001v2008 and ISO14001v2004



Technical assistance
02.41.63.73.25

Fastening the gratings

Fastening the gratings Galvanised steel footway accomplished with FIXCAN1 kit with two stainless steel screws and two brass inserts per grating.

Related products

End cap/Outlet (at end of drain):

➤ **NAT178 : End/Cap Outlet (end or lateral)**

PVC End cap/Outlet base GREY Ø 100 for CONNECTO DRP178 / CAL10BF drains, designed to join together at each end of the drain or on side sockets after uncapping.

➤ **NAV178 : End/Cap Outlet (end or lateral)**

PVC End cap/Outlet base GREY Ø 110 for CONNECTO DRP178 / CAL10BF drains, designed to join together at each end of the drain or on side sockets after uncapping. This part can be replaced with NAT177 after cutting the upper portion.



Tappings:

➤ **STCAN : Tapping (vertical)**

PVC GREY Tapping for vertical outlet Ø 100 (connection to storm drain), designed for all of the drains in the CONNECTO range.

➤ **SVCAN : Tapping (vertical)**

PVC GREY Tapping for vertical outlet Ø 110 (connection to storm drain), designed for all of the drains in the CONNECTO range.

➤ **SXCAN : Tapping (vertical)**

PVC GREY Tapping for vertical outlet Ø 100 (connection to storm drain), designed for all of the drains in the CONNECTO range.



Sand trap

➤ **PSCVT : Sand trap**

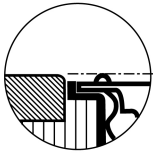
GREY PVC Sand Trap, for CONNECTO drains - width 130 and 200, with PVC basket and outlet connection Ø 100. Designed to trap sand and floating matter, it is mounted directly on the vertical outlet of the drain. Its modular design allows for flexibility in vertical positioning and a 360° orientation for the outlet, to simplify installation.

➤ **PSCVV : Sand trap**

GREY PVC Sand Trap, for CONNECTO drains - width 130 and 200, with PVC basket and outlet connection Ø 110. Designed to trap sand and floating matter, it is mounted directly on the vertical outlet of the drain. Its modular design allows for flexibility in vertical positioning and a 360° orientation for the outlet, to simplify installation.

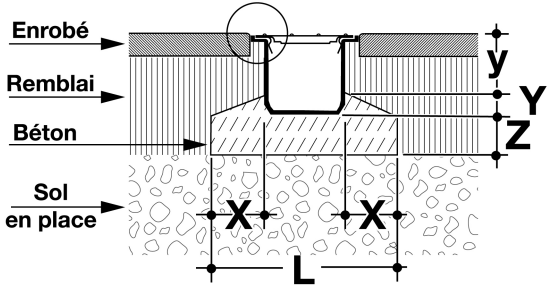
Diagram of installation principle


Installation with embedding:



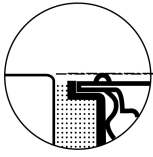
3-5 mm

POSE DES CANIVEAUX HYDRAULIQUES GAMME CONNECTO
SCHEMA DE PRINCIPE



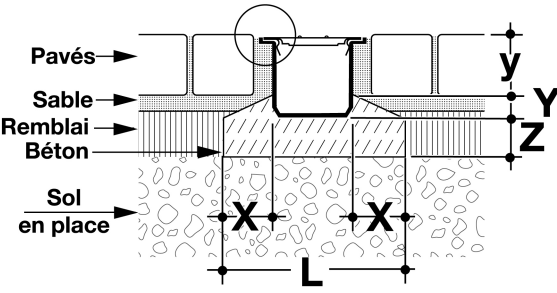
<p>CANIVEAUX HYDRAULIQUES</p>  <p><i>an Aliaxis company</i> B.P. 966 49309 CHOLET tél. 02 41 63 73 83 tech-com.nicoll@alixis.com</p> <p style="font-size: small;">PRINCIPE D'EXECUTION: Ce plan respecte au mieux les normes et les règles professionnelles; l'entrepreneur est tenu de le vérifier et de le compléter éventuellement pour l'adapter aux conditions particulières du chantier.</p>	Gamme CONNECTO / DRP178	Pose avec ENROBE	DRA1/11.06				
	Classe : A15					Dimensions en millimètres	
	Largeur 130	Référence DRP178	Qualité béton 200kg/m ³	X 60	L 250	Y 30	y 70


Installation with paving or plates:



3-5 mm

POSE DES CANIVEAUX HYDRAULIQUES GAMME CONNECTO
SCHEMA DE PRINCIPE



<p>CANIVEAUX HYDRAULIQUES</p>  <p><i>an Aliaxis company</i> B.P. 966 49309 CHOLET tél. 02 41 63 73 83 tech-com.nicoll@alixis.com</p> <p style="font-size: small;">PRINCIPE D'EXECUTION: Ce plan respecte au mieux les normes et les règles professionnelles; l'entrepreneur est tenu de le vérifier et de le compléter éventuellement pour l'adapter aux conditions particulières du chantier.</p>	Gamme CONNECTO / DRP178	Pose avec PAVES	DRA2/11.06				
	Classe : A15					Dimensions en millimètres	
	Largeur 130	Référence DRP178	Qualité béton 200kg/m ³	X 60	L 250	Y 30	y 70